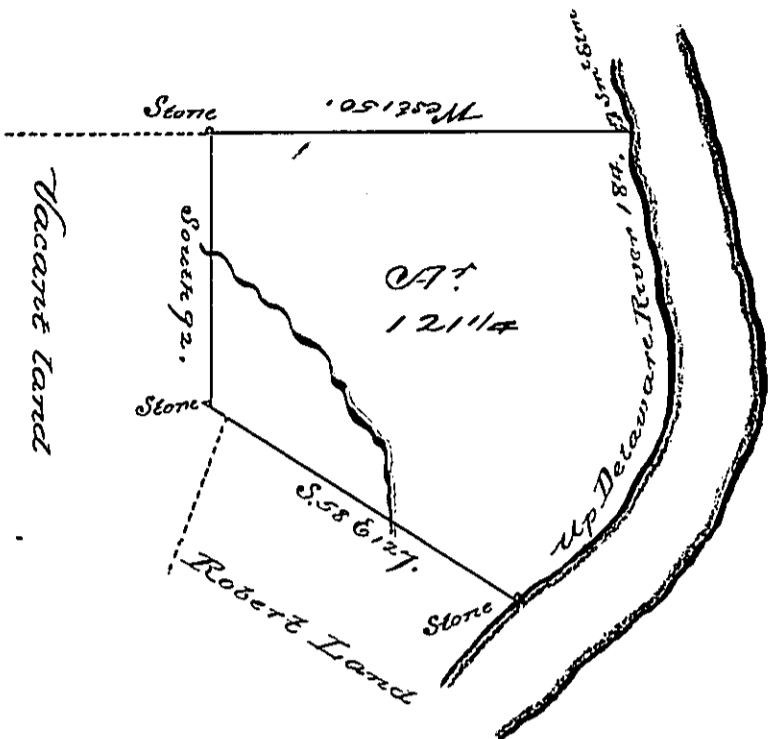


The Honorable the Proprietaries



Bearing & distances
up Delaware are
1 N. 51. E. 54
2 N. 20 E 48
3 N. 11 1/2 W 82
184

By Virtue of a Warrant dated the 5th day of May
1775 Surveyed the 30th day of June 1775 to Moses
Thomas the above described tract of land situ-
ate on the West side of Delaware River below
Cockshunk in the County of Northampton
containing One hundred and twenty-one Acres
a Quarter and the Allowance of Six p cent &c.

J. Geo. Palmer D.S.

To John Lukens Esquire
Surveyor General

Returned in the Surveyor General
Office the 6 January 1776 -

Copy-

IN TESTIMONY that the above is a copy of the original remaining on file in the
Department of Internal Affairs of Pennsylvania, made con-
formably to an Act of Assembly approved the 16th day of
February, 1833, I have hereunto set my Hand and caused
the Seal of said Department to be affixed at Harrisburg, this

Third day of May 1898

James W. Latta
Secretary of Internal Affairs.